

# Form Page 1

Input Search Box

Submit

Input Make

Input Model

Input Year

The form consists of a search bar with the placeholder text "Search" and a submit button. Below the search bar are three input fields labeled "Make", "Model", and "Year".



Car

Horsepower / Torque

Weight

Car

Horsepower / Torque

Weight

Car

Horsepower / Torque

Weight

The search results are displayed as a list of three car entries. Each entry is contained within a white box with a light gray border and is divided into three horizontal sections: "Car", "Horsepower / Torque", and "Weight".

The search results will show the cars' model and make, horsepower and torque at the respective RPM's, and the cars' weights.

Tap the car that you want to show more detailed information.

From here, you can also add the car to your Bookmarks list.

## Form Page 2

Car Name
Car Image
Car Info
Car Info
Car Info
Car Info
Car Info
Car Info
Car Info
Car Info



2002 Honda S2000
240 hp / 153 ft-lbs.
2800 lbs.
2006 BMW 330Ci
225 hp / 214 ft-lbs.
3285 lbs.
2008 Ferrari 430 Scuderia
503 hp / 347 ft-lbs.
2750 lbs.

Each car will have its own page- a template that will load and fill in the appropriate information slots with data from our database.

Here, you can add the car to your Bookmarks list.

The Bookmarks list page lists cars by their name, horsepower, torque, and weight so you can quickly compare the capabilities of different cars on a single screen.

Our main focus should be how quickly the user can distinguish a car's power to weight ratio so that it can be realistically compared to other cars. This is why the Results page and Bookmarks page must feature horsepower and weight.

appMobi XDK

localhost:58888/\_emulator/\_ide/index.html

Current Project: arthur.carapp: 3.2.5

GO PRO TODAY!  
Upgrade now to an appMobi Pro Account.  
• Build for Apple  
• Test your app projects anywhere via 3G/4G connection  
• Allow clients and team members to view app projects  
• Unlock purchasing of powerful App Tools  
...AND MORE!  
\$99/year  
LEARN MORE

THE CAR APP  
BROWSE SEARCH BOOKMARKS  
Search a Car or Filter your Results  
SEARCH

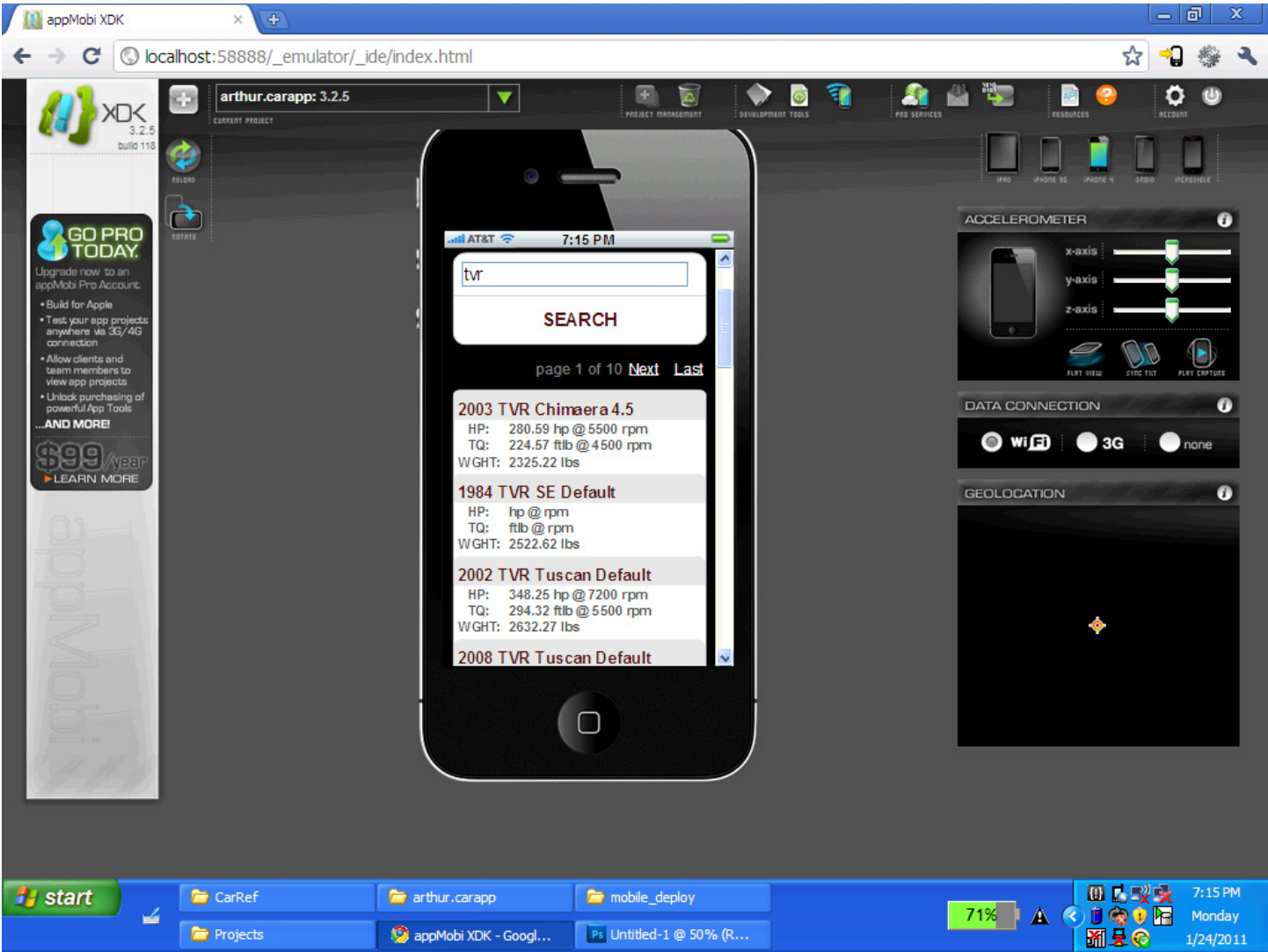
ACCELEROMETER  
x-axis  
y-axis  
z-axis  
FLAT VIEW STIC TILT PLAY CAPTURE

DATA CONNECTION  
Wi-Fi 3G none

GEOLOCATION

start | CarRef | arthur.carapp | mobile\_deploy | Projects | appMobi XDK - Googl... | 80% | 7:05 PM Monday 1/24/2011

The image shows a screenshot of the appMobi XDK IDE interface. At the top, a browser window displays the URL 'localhost:58888/\_emulator/\_ide/index.html'. The main workspace is a dark-themed interface. On the left, there's a sidebar with a 'GO PRO TODAY!' advertisement and a vertical 'appMobi' watermark. The central area features a mobile emulator showing an application titled 'THE CAR APP' with a search bar and a 'SEARCH' button. The emulator's status bar shows 'AT&T' and '7:04 PM'. To the right of the emulator are several control panels: 'ACCELEROMETER' with sliders for x, y, and z axes; 'DATA CONNECTION' with radio buttons for 'Wi-Fi', '3G', and 'none'; and 'GEOLOCATION' with a map icon. The bottom of the screen shows a Windows taskbar with the 'start' button, several open folders ('CarRef', 'arthur.carapp', 'mobile\_deploy', 'Projects'), and a taskbar icon for 'appMobi XDK - Googl...'. The system tray on the right shows a battery level of 80%, the time '7:05 PM', the date 'Monday 1/24/2011', and various system icons.



appMobi XDK

localhost:58888/\_emulator/\_ide/index.html

Current Project: arthur.carapp: 3.2.5

GO PRO TODAY!  
Upgrade now to an appMobi Pro Account.

- Build for Apple
- Test your app projects anywhere via 3G/4G connection
- Allow clients and team members to view app projects
- Unlock purchasing of powerful App Tools

...AND MORE!  
\$99/year  
LEARN MORE

2008 TVR Tuscan Default

Drivetrain	
HORSEPOWER:	343.28 hp @ 7200 rpm
TORQUE:	286.96 ft*lbs @ 5500 rpm
TRANSMISSION:	Manual 5-speed
DRIVE:	Rear

Engine	
POSITION:	Front
TYPE:	in-line 6-cyl
SIZE:	3996 cc
VALVE S PER CYLINDER:	4
BORE STROKE:	3.78 x 3.6
COMPRESSION RATIO:	11.0:1

Performance

ACCELEROMETER

x-axis

y-axis

z-axis

DATA CONNECTION

WiFi 3G none

GEOLOCATION

start

CarRef arthur.carapp mobile\_deploy

Projects appMobi XDK - Googl... Ps Untitled-1 @ 50% (La...

70% 7:16 PM Monday 1/24/2011

